

SOFTWARE + HARDWARE + HUMANS



KNIGHTSCOPE

www.knightscope.com

Knightscope, Inc., 1070 Terra Bella Avenue, Mountain View, CA 94043

© 2017 Knightscope, Inc. All Rights Reserved.

Advantages of Autonomous Robots for Security

Highly Productive in Repetitive or Even Dangerous Security Roles

Autonomous Charging Allows for Continuous Operation 24/7/365

Sensors Record & Retain More Data than a Human Alone

Engages the Public & Enhances the Brand

Saves Time & Money

AI Deep Learning



Why Our Clients Use Autonomous Security Robots

Security Robots are a Force Multiplier and Proven Deterrent

Automatic License Plate Recognition Secures Parking Lots/Structures

Robots Help Mitigate Workplace Violence and Improve Public Safety

Robots Patrol Hard to Reach and Previously Neglected Spaces

Continuous Human Patrol Was a Financial Challenge

Data Empowers Users to Make More Informed, Safer Decisions



Why Our Clients Use Autonomous Security Robots

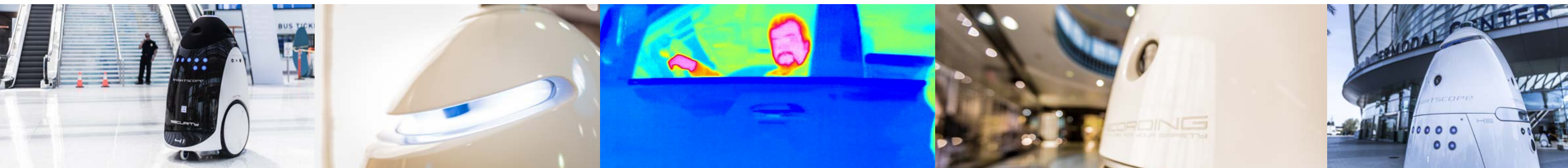
Eye-level Video Surveillance

- Enables Higher Quality Identification in Incident Investigations
- Supplements Fixed Camera Blind Spots and Deficiencies

Mobile Thermal Imaging

- Fills the Need for Early Fire Detection & After Hours People Detection

Cost Savings Through Security Workforce Augmentation



Autonomous Data Machine (ADM)

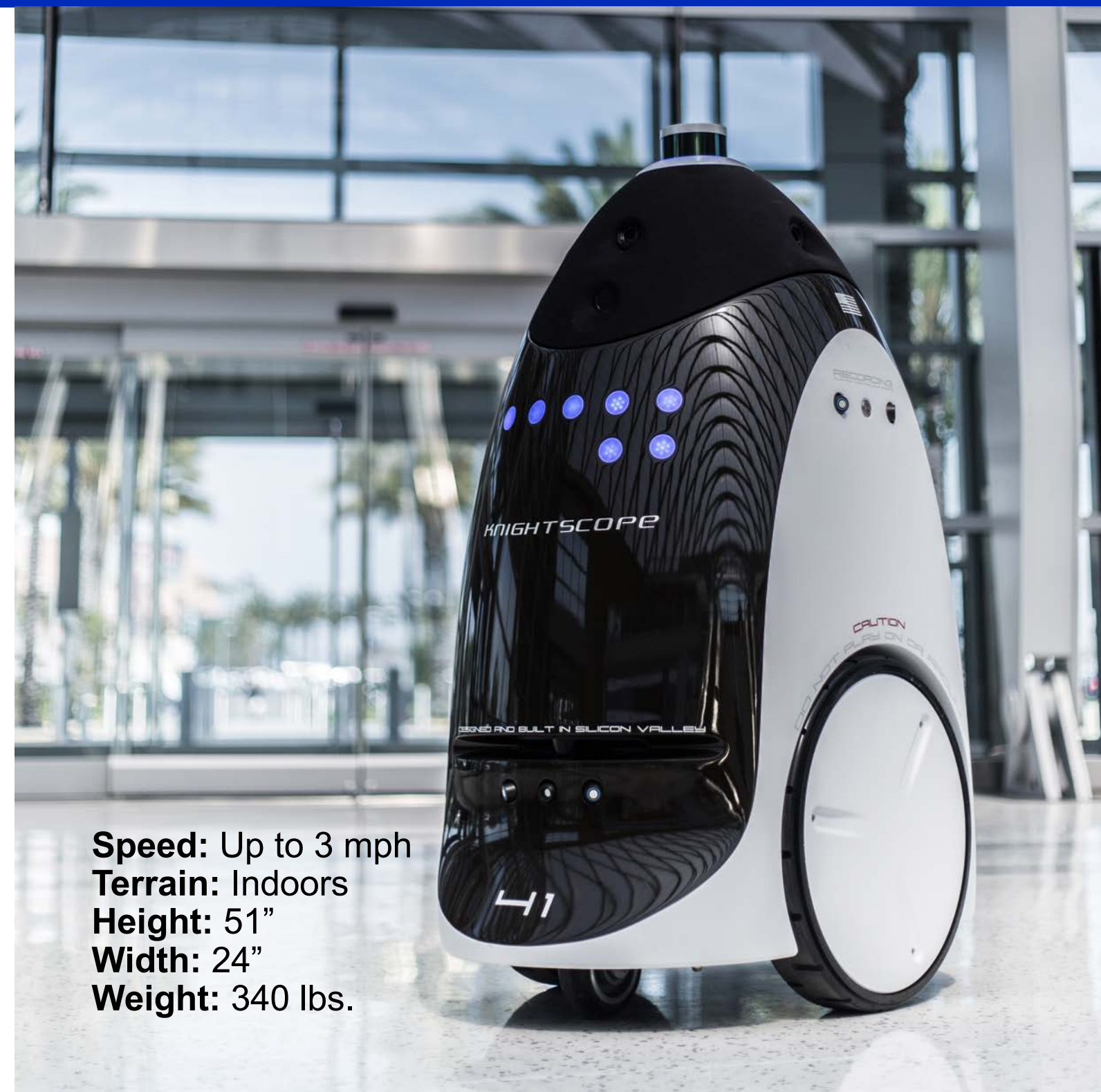


INDOOR USE

Designed for complex dynamic indoor environments such as indoor malls, office buildings, manufacturing facilities, stadium plazas, warehouses or schools.

SMALLER SIZE

Smaller and narrower than its outdoor counterpart, allowing easier maneuvering indoors.



Speed: Up to 3 mph
Terrain: Indoors
Height: 51"
Width: 24"
Weight: 340 lbs.

Autonomous Data Machine (ADM)



OUTDOOR USE

Built to operate in ADA Compliant areas around open air malls, corporate campuses, hospitals, stadiums, retailers, warehouses, logistics facilities, college campuses, airports & train stations.

ADDED FEATURES

Automatic License Plate Recognition; Parking Space Utilization; Parking Meter.



Knightscope Security Operations Center

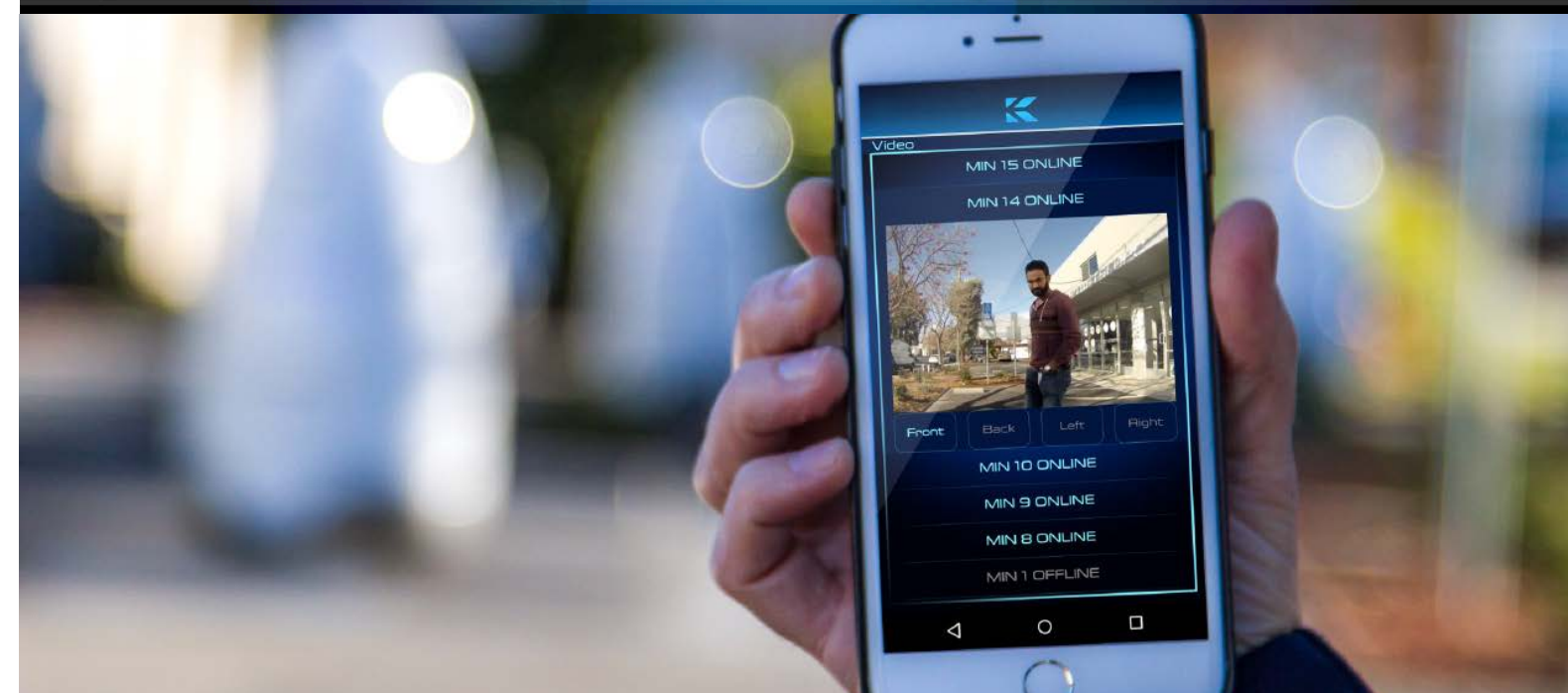
KSOC

SOFTWARE AND UI

All data generated by Knightscope ADMs is accessible through the Knightscope Security Operations Center (KSOC), a highly intuitive, browser-based user interface. Customers can recall, review, and save the data for forensic or event documenting purposes.

MOBILE

The KSOC iOS mobile app (Beta) is currently available, with an Android version coming soon. Put the power of the KSOC right in the palm of your hand.



KSOC Detail

EVENTS
Real time alerts from machines

VIDEO
Live streaming & recorded videos

DETECTIONS
Detections by threat level

MOBILE
App for iOS & Android devices



ALPR
License plate detection & analytics

THERMAL
Detect fires with thermal imaging



INTERCOM
Two-way live audio communication between Autonomous Data Machine (ADM) & KSOC

BROADCAST
Public address system for live & pre-recorded messages

Broadcast and Intercom



Prerecorded Messages Based on Time, Location or Event
 Live Two-Way Intercom
 Live Audio & Live Broadcast

MIN 30

EVENTS

14:42:09

14:47:00

MACHINE CONTROL PANEL

PATROL

STOP

SOUND

MUTE

ALARM

MUTE

BROADCAST

INTERCOM

LIVE AUDIO

PATROL

STOP

BROADCAST

Pre-recorded Messages

Live Broadcast

Select message

LOW

MAX

ALL

MIN 12

MIN 30

MIN 34

BROADCAST

HIGH RES

LOW RES

Select message

Knightscope

Our twitter handle is @iknightscope

Learn more about us

In case you are wondering, I am security robot

Greeting

Good morning

Good afternoon

Good evening

Hello

Hi

Good day to you

Excuse me!

Pardon me!

Emergency

Step away from the machine

Step away from the machine now

Seriously step away

5..4..3..2..1

Authorities have been notified

People Detection

ID	DESCRIPTION	DATE/TIME	PERSON?
56355600	People Detection	04/13/17 15:47:56 PDT	✓ ✕
56355590	People Detection	04/13/17 15:47:36 PDT	✓ ✕
56355588	People Detection	04/13/17 15:47:33 PDT	✓ ✕
56355584	People Detection	04/13/17 15:47:29 PDT	✓ ✕
56355574	People Detection	04/13/17 15:47:13 PDT	✓ ✕
56355572	People Detection	04/13/17 15:47:11 PDT	✓ ✕
56355571	People Detection	04/13/17 15:47:10 PDT	✓ ✕
56355570	People Detection	04/13/17 15:47:09 PDT	✓ ✕
56355569	People Detection	04/13/17 15:47:06 PDT	✓ ✕
56355567	People Detection	04/13/17 15:46:57 PDT	✓ ✕
56355563	People Detection	04/13/17 15:46:56 PDT	✓ ✕



MIN: 30
DATE: 04/13/17
TIME: 15:47:56 PDT
ZONE: Zone 1
CAMERA: Front



ID	DESCRIPTION	DATE/TIME	PERSON?
56355600	People Detection	04/13/17 15:47:56 PDT	✓ ✕
56355590	People Detection	04/13/17 15:47:36 PDT	✓ ✕
56355588	People Detection	04/13/17 15:47:33 PDT	✓ ✕
56355584	People Detection	04/13/17 15:47:29 PDT	✓ ✕
56355574	People Detection	04/13/17 15:47:13 PDT	✓ ✕
56355572	People Detection	04/13/17 15:47:11 PDT	✓ ✕
56355571	People Detection	04/13/17 15:47:10 PDT	✓ ✕
56355570	People Detection	04/13/17 15:47:09 PDT	✓ ✕
56355569	People Detection	04/13/17 15:47:06 PDT	✓ ✕
56355567	People Detection	04/13/17 15:46:57 PDT	✓ ✕
56355563	People Detection	04/13/17 15:46:56 PDT	✓ ✕

RECORDED

KNIGHTSCOPE HEADQUARTERS
1070 TERRA BELLA AVE MOUNTAIN VIEW CA 94043

MIN 30
HIGH RES LOW RES
00:00:00
DOWNLOAD VIDEOS

LEFT REAR RIGHT

Timeline

PEOPLE 2489
PLATES 0
VEHICLES 0
EVENTS 809
THERMAL 4511
SIGNALS 0
SIGNALS 105

Thu 6:55 AM - 282248: Person(s) detect Thu 6:50 AM - 282246: Person(s) detect Thu 6:44 AM - 282242: Person(s) detect

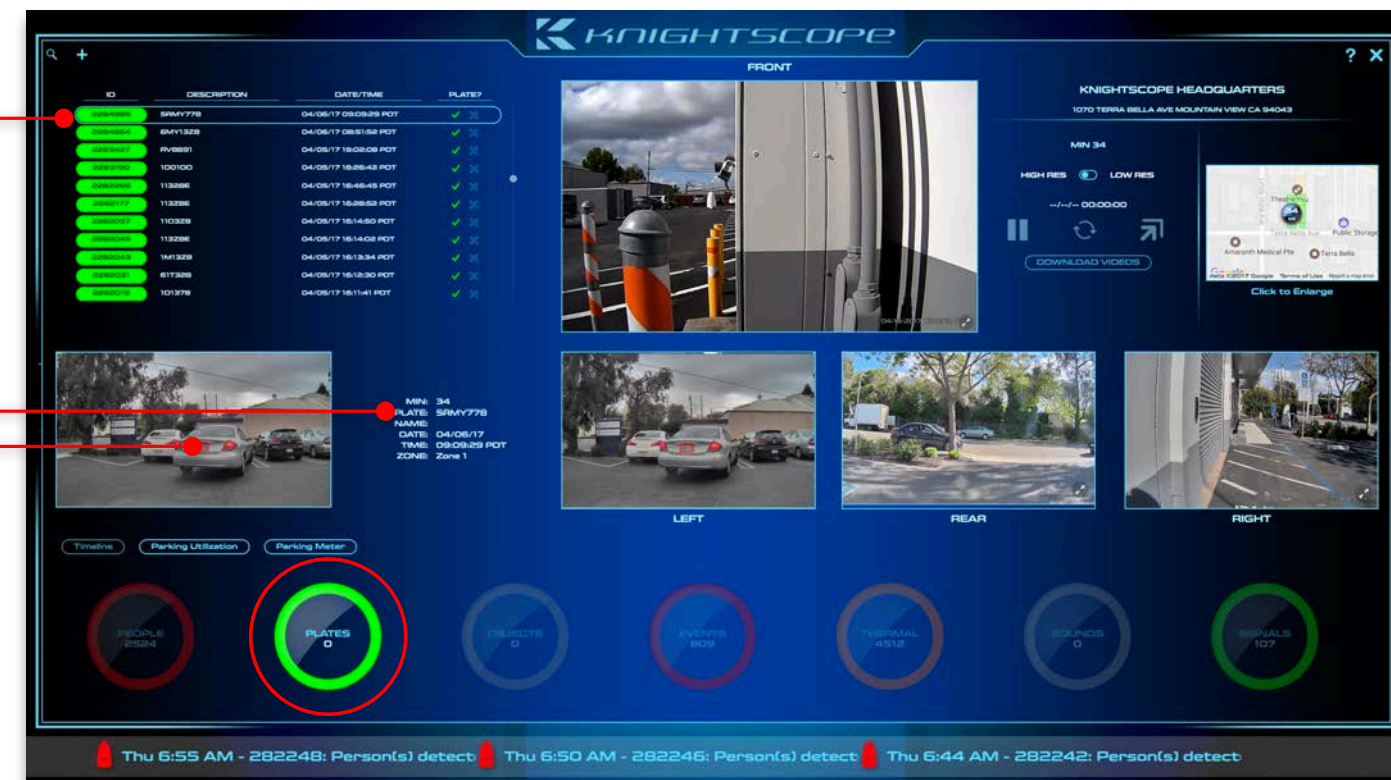
Unauthorized Individuals in Secured Areas
Suspicious Persons After Hours
Trespassers or Criminal Activity
Positive Identification Capture

Automatic License Plate Recognition (ALPR)

ID	DESCRIPTION	DATE/TIME	PLATE?
2284985	SRMY778	04/06/17 09:09:29 PDT	✓ ✕
2284864	6MY1328	04/06/17 09:51:52 PDT	✓ ✕
2283427	RVB891	04/05/17 19:02:08 PDT	✓ ✕
2283190	100100	04/05/17 18:26:42 PDT	✓ ✕
2282269	11328E	04/05/17 16:46:45 PDT	✓ ✕
2282177	11328E	04/05/17 16:28:52 PDT	✓ ✕
2282057	110328	04/05/17 16:14:50 PDT	✓ ✕
2282045	11328E	04/05/17 16:14:02 PDT	✓ ✕
2282043	1M1328	04/05/17 16:13:34 PDT	✓ ✕
2282031	61T328	04/05/17 16:12:30 PDT	✓ ✕
2282019	101378	04/05/17 16:11:41 PDT	✓ ✕

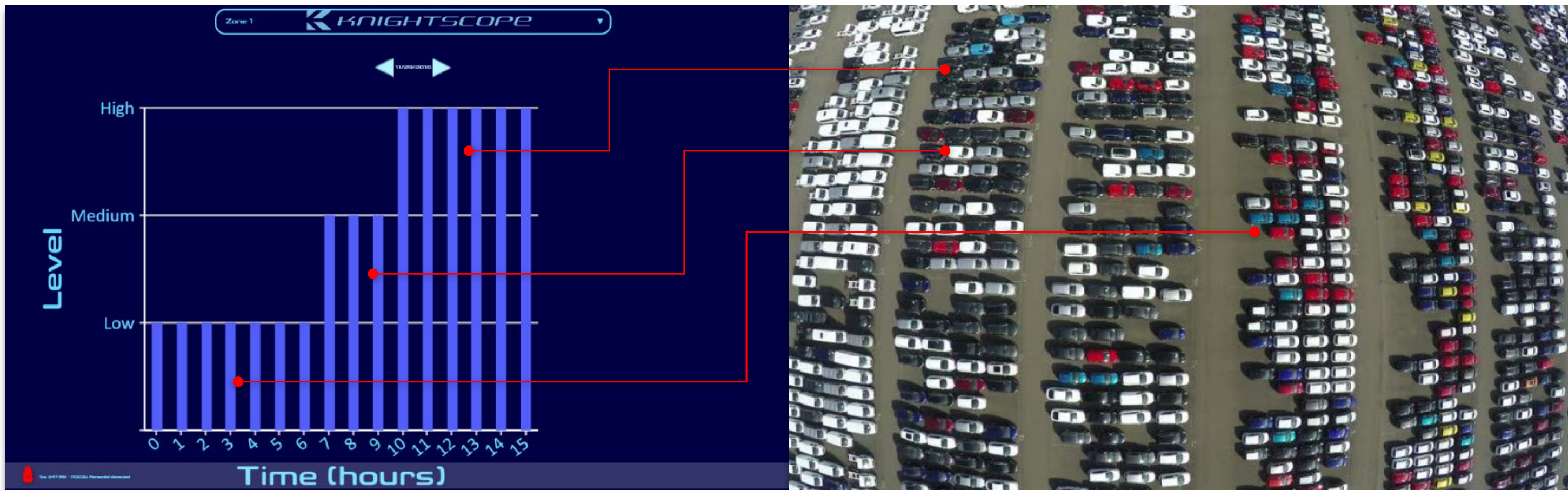


MIN: 34
 PLATE: SRMY778
 NAME:
 DATE: 04/06/17
 TIME: 09:09:29 PDT
 ZONE: Zone 1



Protect Employees from Domestic Abusers
 Mark Suspicious Vehicles
 Track Terminated Employees Returning
 Police BOLO Alerts for Vehicles & Plates

Parking Utilization





Real Estate Planning & Development
Overflow Forecasting by Time of Day

Improved Patrol Scheduling
Marketing

Parking Meter

Parking Meter - Top 10



Google
Map Data Terms of Use


Zone 1

11/29/2016

PLATE	DURATION
7EPK422	01:34:43
7SBA580	01:27:41
6CLT452	01:26:18
7HYG479	01:24:56
7SYT761	00:32:50
6BJM533	00:32:46
AUJ9147	00:32:46
60851CZ	00:18:04
60851C2	00:07:51
60851C2	00:04:27

Parking Meter - Top 10

BACK



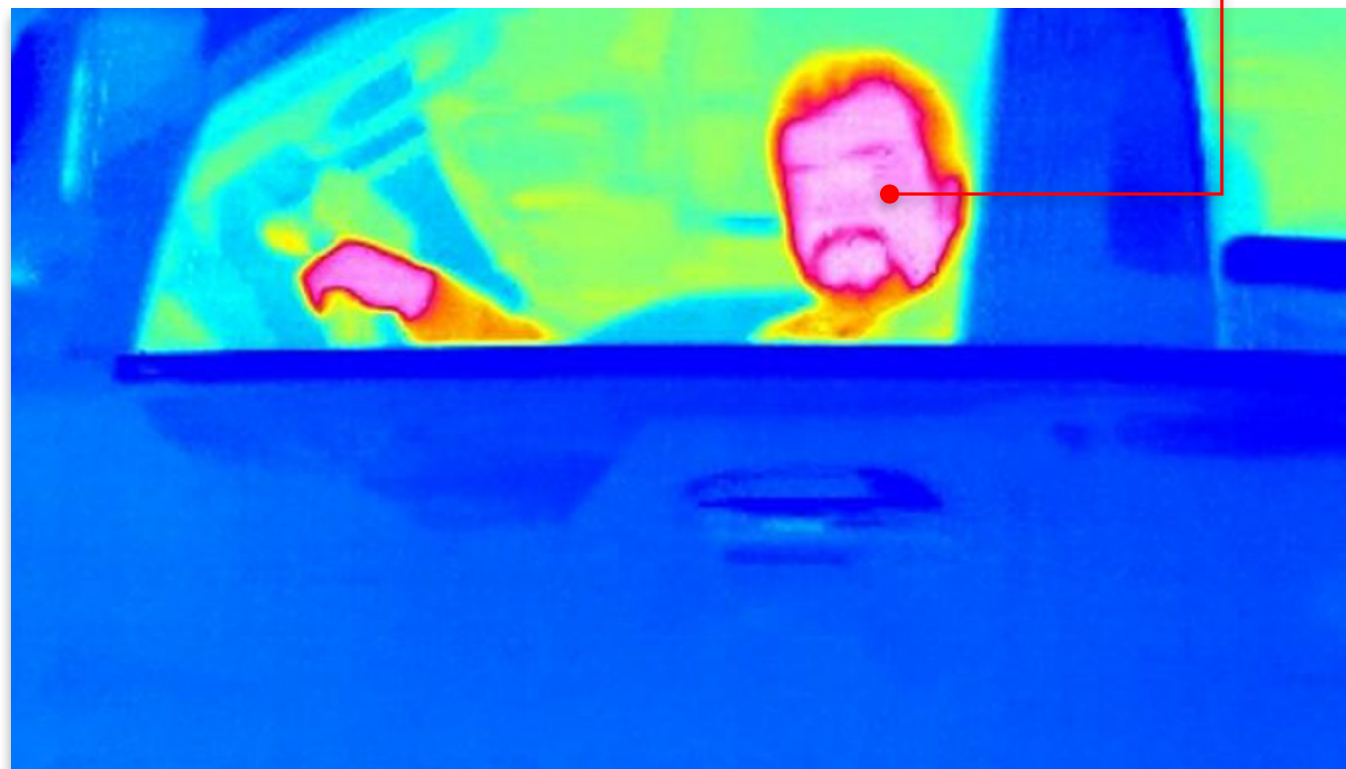
Parking Violations or Abuses

Suspicious or Abandoned Vehicles

Thermal Recognition & Anomaly Detection



ID	DESCRIPTION	DATE/TIME
13134546	Max Temperature 104 ° F	04/14/17 07:09:14 PDT
13134544	Max Temperature 126 ° F	04/14/17 07:09:01 PDT
13134542	Max Temperature 108 ° F	04/14/17 07:08:51 PDT
13134524	Max Temperature 106 ° F	04/14/17 07:05:19 PDT
13134523	Max Temperature 106 ° F	04/14/17 07:05:13 PDT
13134521	Max Temperature 106 ° F	04/14/17 07:04:15 PDT
13134520	Max Temperature 108 ° F	04/14/17 07:04:04 PDT
13134500	Max Temperature 104 ° F	04/14/17 07:00:32 PDT
13134499	Max Temperature 117 ° F	04/14/17 07:00:24 PDT
13134497	Max Temperature 106 ° F	04/14/17 06:59:18 PDT
13134494	Max Temperature 91° F	04/14/17 06:58:57 PDT



The interface displays a list of thermal events on the left, a main video feed in the center, and various analytics on the right. The analytics section includes a map, a timeline, and several circular gauges for different metrics.

ID	DESCRIPTION	DATE/TIME
13134546	Max Temperature 104 ° F	04/13/17 15:54:54 PDT
13134544	Max Temperature 104 ° F	04/13/17 15:54:18 PDT
13134542	Max Temperature 188 ° F	04/13/17 15:53:58 PDT
13134524	Max Temperature 104 ° F	04/13/17 15:53:44 PDT
13134523	Max Temperature 104 ° F	04/13/17 15:53:13 PDT
13134521	Max Temperature 104 ° F	04/13/17 15:52:40 PDT
13134520	Max Temperature 104 ° F	04/13/17 15:52:08 PDT
13134500	Max Temperature 104 ° F	04/13/17 15:51:35 PDT
13134499	Max Temperature 104 ° F	04/13/17 15:49:57 PDT
13134497	Max Temperature 104 ° F	04/13/17 15:49:59 PDT

Analytics section:

- PEOPLE: 2907
- PLATES: 0
- VEHICLES: 0
- EVENTS: 809
- THERMAL: 4524**
- BOXINGS: 0
- SIGNALS: 113

Timeline:

- Thu 6:55 AM - 282248: Person(s) detect
- Thu 6:50 AM - 282246: Person(s) detect
- Thu 6:44 AM - 282242: Person(s) detect

Early Fire & Anomaly Detection
 Unauthorized Individuals in Restricted Areas
 Suspicious Persons After Hours
 Trespassers or Criminal Activity
 Positive Identification Capture

Advanced Signal Detection

ID	NO. OF WL	NO. OF BL	NO. OF UNIDENTIFIED	TOTAL
305394	0	0	268	268
305374	0	0	265	265
305353	0	0	253	253
305343	0	0	235	235
305324	0	0	204	204
305312	0	0	204	204
305290	0	0	192	192
305279	0	0	165	165
305259	0	0	122	122
305248	0	0	122	122
305240	0	0	90	90

MIN	MANUFACTURER	ADDRESS
MIN 22	ATEX	00:00:DA:F9:D7:DA
MIN 24	NVIDIA	00:04:4B:5A:C0:26
MIN 22	AIRGO NETW ...	00:0A:F5:DC:C4:D8
MIN 22	ABOCOM	00:12:0E:EC:CF:28
MIN 22	VIA NETWORK ...	00:12:7B:64:8A:90
MIN 24	VIA NETWORK ...	00:12:7B:64:8A:90

BLACKLISTED

WHITELISTED

UNIDENTIFIED

91% of Adults Have Smartphones

90% of Smartphone Users Use WiFi When Available

Suspicious Packages (device inside)

Unauthorized Devices in Secured Areas

Workplace Violence Threats

Positive Identification Capture

24/7 Monitoring



The KSOC gives security teams the ability to perform forensic investigations from anywhere in the world with a Chrome browser & an Internet connection

Branding

BRANDING OPTION

Knightscope will work directly with you to design graphics that will effectively convey the purpose of the machines, while protecting and promoting your brand.



SOFTWARE + HARDWARE + HUMANS

Save up to 75% and get up to 128 more hours of coverage with our Autonomous Data Machines.

- 

Force Multiplying
Physical Deterrence
- 

Automatic License
Plate Recognition
- 

People
Detection
- 

Live Audio
Broadcast
- 

360 Degree HD
Video Streaming
- 

Thermal Anomaly
Detection
- 

Two-Way
Intercom
- 

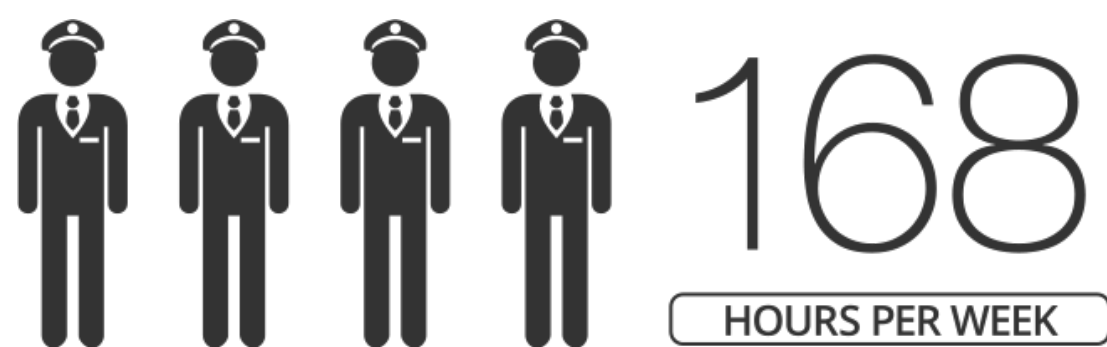
Pre-Recorded
Broadcast Messages
- 

Automatic Signal
Detection

Knightscope Integrated Weekly Coverage



Traditional Guard Weekly Coverage



Why Use Security Robots?

Stronger Physical Deterrent 24/7

In-Motion Visible Surveillance

Enhanced Eye-Level HD Video Footage

Parking Surveillance & Parking Security Management

Increased Patrol & Recorded Video Coverage Capacity

Expanded Workplace Violence Prevention with License Plate & Device Blacklisting

Policy Participation with Audio Reinforcement Using Broadcast

Early Alerting for Fire Hazards or Dangerous Levels of CO₂

Threat Detecting for Cyber-Attacks or Suspicious Packages with External Devices

Financial Advantages with Security Workforce Augmentation

Software, Firmware & Limited Hardware Upgrades Provided Free of Charge

